

FARM LIQUIDATION AUCTION



LOCATION: FROM MILES CITY, MT- TAKE HIGHWAY 59 N (TOWARDS JORDAN) FOR 2.2 MILES, TURN RIGHT ON ROAD 489 EAST (KINSEY ROAD) FOR 11.5 MILES.
OWNER: JACK WITCHER 406-951-4470 • LUNCH WILL BE AVAILABLE.

SATURDAY, MAY 11, 2024 10:00 A.M.

FARM EQUIPMENT

- JD 4630 Tractor, 3 pt., PTO, Duals, Quad Range
- JD 4630 Tractor, 3 pt., PTO, Power Shift & JD 158 Front-end Loader w/bucket & grapple
- JD 4040 Tractor, 3 pt., PTO, Power Shift w/ JD 4230 engine
- 10' Box Scraper (like new)

SKID STEER, PICKUPS, TRUCK, & SIDE-BY-SIDE

- Bobcat M600 Skid Steer w/Kohler engine
- 1995 Dodge Ram diesel Pickup, 3500 dually, Cummins engine, 4x4, 5-speed
- 1993 Chevy Cheyenne Pickup, 4x4, auto w/flatbed
- 1987 Humvee, diesel, 4x4, approx. 28,000 miles
- 1987 Ford Ranger Pickup, 4x4
- 1986 GMC S15 Pickup, 4x4
- 1975 Chevy C65 Truck, 366 engine, approx.. 30,000 miles w/16' box & hoist
- JD 825i Gator Side-by-Side, cab, heater, winch, front brush guard, hood cargo rack

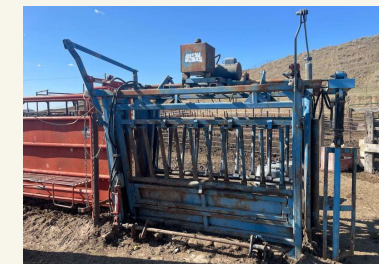


TRAILERS & LIVESTOCK EQUIPMENT

- 2017 Max XD 30' Tandem Axle 5th wheel Flatbed Trailer w/beavertail & fold-over ramps, 7,000 # axles
- 2011 PJ 42' Tandem Dually 5th wheel Flatbed Trailer & Hayracks
- Bumper-pull Tandem Axle 15' Skid Steer Trailer w/7,000 # axles
- Hale 16' Car Trailer
- ATV Trailer
- Homemade Trailer & 100-gallon Poly Tank
- 12" Irrigation Pump w/40 hp (new) electric motor (still in crate)
- Irrigation Pipe Trailer w/double tongue
- Nomad 30' Camper 5th wheel Trailer w/slide-out
- Prowler Lynx 20' Camper 5th wheel Trailer
- 2002 LQ 3-Horse Trailer w/sleeping quarters, fully equipped, AC
- 2003 LQ 3-Horse Trailer w/sleeping quarters, fully equipped, AC
- 2017 Vermeer Bale Processor w/Scale
- Heavy Duty Portable Loading Chute
- Cattle AC Hydraulic Cattle Chute w/electric motor
- Powder River Calf Chute w/trailer
- Bumper-pull Calf Catcher
- Heavy Duty Maternity Pen w/self-catch Headgate
- Old Cattle Chute
- (2) Double-Bale heavy duty Bale Feeders
- 3 pt. Double-Bale Hauler
- Pickup Cake Feeder
- 4-wheeler Aluminum Cake Feeder

GUNS & SHOP

- Henry lever action 17 HMR Rifle w/3x9 Scope
- Remington 17 REM, model 700, bolt action w/3x9 Weaver Scope
- Mossberg 17HMR, bolt action w/clip & Tasco 3x9 Scope
- Hobart Stick-mate, model 205C
- Propane Cutting Torch
- Floor model Drill Press
- Predator 8750-watt Generator w/gas engine
- Cut-off Saw
- Milwaukee Hammer Drill
- Makita Sabre Saw
- Electric Grinders
- Water Pumps w/engines
- Floor Jack
- Steel Bench
- Electric Drill
- Homak Toolbox
- Pickup Toolbox
- Car Ramps
- Chain Boomers
- Misc. Tools
- Anvil
- Antique Stationary Engine
- Roll of Electric Wire



AUCTIONEER'S NOTE

Jack has sold his ranch and will be liquidating his full line of ranch equipment at auction. There is lots of livestock equipment. This will not be an all-day auction. We hope to see you on May 11th! ~Rick



RK
Rick Kniepkamp



Circle, Montana STATEWIDE AUCTION (406) 485-2548

WE SELL & ADVERTISE ACROSS THE UNITED STATES

www.r-kauction.com

Rick Kniepkamp (406) 485-2548 or cell (406) 939-1632

All information is from sources deemed reliable, but is not guaranteed by the Sellers or the Auctioneers. Offering is subject to error, omission, and approval of purchase by owner. We urge independent verification of each and every item submitted to the satisfaction of any prospective buyer. It is every potential bidder/purchaser's sole responsibility to accomplish his or her due diligence in whatever manner he or she deems advisable. Announcements made sale day take precedence over any printed materials. The items sell "As is-Where is." R-K Statewide Auction Service and its auctioneers are acting solely as auctioneers for the Sellers.