

MID-RIVERS

LOCATION: Circle, MT - Mid-Rivers Headquarters, 904 C Avenue
 OWNER: Mid-Rivers Telephone Cooperative, Inc. FOR MORE INFORMATION: Vickie (406) 485-3301

FREE LUNCH COMPLIMENTS OF MID-RIVERS
SATURDAY, SEPTEMBER 16, 2017 • 10:00 A.M.
 (Immediately Following The Parade)

AUCTION



OFFICE EQUIPMENT

- LAMINATED TABLE
- LAMINATED END TABLE
- LAMINATED DESK
- 2'X6' WOODEN DESK
- 3'X6' WOODEN DESK W/RETURN
- ITV CART
- METAL FILING CART
- (6) VINYL SWIVEL CHAIRS
- (5) CLOTH ARM CHAIRS
- (3) OFFICE CHAIRS
- (2) DESK CHAIRS
- (5) 4 DRAWER LATERAL FILE CABINET
- (4) 4 DRAWER LETTER FILE CABINET
- (2) 2 DRAWER LEGAL FILE CABINET
- 3 DRAWER LATERAL FILE CABINET
- (6) 4 DRAWER LEGAL FILE CABINET
- 10"X12"X33" BLACK METAL ORGANIZER
- (4) CUBICLE DIVIDERS
- SINGLE LOCKER UNIT



VEHICLES, TRAILERS & PICKUP BOXES

- 2013 CHEVY 2500HD 4X4 EXT CAB, 6.0L V8 GAS, UTILITY BODY, AM/FM, AIR/TILT/CRUISE, 112,447 MILES
- 2013 CHEVY 2500HD 4X4 EXT CAB, 6.0L V8 GAS, UTILITY BODY, AM/FM, AIR/TILT/CRUISE, 107,842 MILES
- 2013 CHEVY 2500HD 4X4 EXT CAB, 6.0L V8 GAS, UTILITY BODY, AM/FM, AIR/TILT/CRUISE, 113,266 MILES
- 2012 CHEVY 2500HD 4X4 EXT CAB, 6.0L V8 GAS, UTILITY BODY, AM/FM, AIR/TILT/CRUISE, 107,161 MILES
- 2012 CHEVY 2500HD 4X4 EXT CAB, 6.0L V8 GAS, UTILITY BODY, AM/FM, AIR/TILT/CRUISE, 136,555 MILES
- 2008 CHEVY 2500HD 4X4 EXT CAB, 6.0L V8 GAS, UTILITY BODY, AM/FM, AIR/TILT, CRUISE, 88,269 MILES
- 2008 CHEVY 2500HD 4X4 EXT CAB, 6.0L V8 GAS, UTILITY BODY, AM/FM, AIR/TILT, CRUISE, 97,374 MILES
- 2006 CHEVY 2500HD 4X4 EXT CAB, 6.0L V8 GAS, UTILITY BODY, AM/FM, AIR/TILT/CRUSIE, 106,353 MILES
- 2004 CHEVY 1500 4X4 REG CAB, 4.8L V8 GAS, TOPPER, AM/FM, AIR, 109,059 MILES
- 2013 FORD F350 4X4 EXT CAB, 6.7L V8 DIESEL, SRW, UTILITY BODY, AM/FM, AIR/TILT/CRUISE, 115,743 MILES
- 2012 FORD F250 4X4 EXT CAB, 6.2L V8 GAS, UTILITY BODY, AM/FM, AIR/TILT/CRUISE, 104,955 MILES
- 2012 FORD F250 4X4 EXT CAB, 6.2L V8 GAS, UTILITY BODY, AM/FM, AIR/TILT/CRUISE, 114,193 MILES
- 2011 FORD F450 4X4 EXT CAB, 6.7L V8 DIESEL, DUALY, REEL BED, AM/FM, AIR/TILT/CRUISE, 110,728 MILES
- 2011 FORD F250 4X4 EXT CAB, 6.2L V8 GAS, UTILITY BODY, AM/FM, AIR/TILT/CRUISE, 101,309 MILES
- 2009 FORD F450 4X4 EXT CAB, 6.4L V8 DIESEL (BAD), DUALY, REEL BED, AM/FM, AIR/TILT/CRUISE, 90,456 MILES
- 2009 FORD F250 4X4 EXT CAB, 5.4L V8 GAS, UTILITY BODY, AM/FM, AIR/TILT/CRUISE, 112,629 MILES
- 2009 FORD FOCUS FWD, 2.0L I-4 GAS, AM/FM/CD, AIR/TILT/CRUISE, PWR W/L/M, 32,467 MILES
- 2008 FORD F350 4X4 EXT CAB, 6.8L V10 GAS (REBUILT), DUALY, REEL BED, AM/FM, AIR/TILT/CRUISE, 90,616 MILES
- 2007 FORD FREESTYLE AWD, 3.0L V6 GAS, AM/FM/CD, AIR/TILT/CRUISE, PWR W/L/M, STO-N-GO, 91,385 MILES
- 2009 BELSHE 24' GOOSENECK TANDEM AXLE DUALY TRAILER W/ 5' BEAVERTAIL & RAMPS
- 1988 BELSHE 20' GOOSENECK TANDEM AXLE DUALY TRAILER W/ 5' BEAVERTAIL & RAMPS
- 2005 TRANSCRAFT DTL 3000 DROPDECK TRIPLE AXLE DUALY TRAILER W/ BEAVERTAIL & RAMPS
- 2017 FORD PICKUP BOX
- (8) 2017 RAM PICKUP BOXES

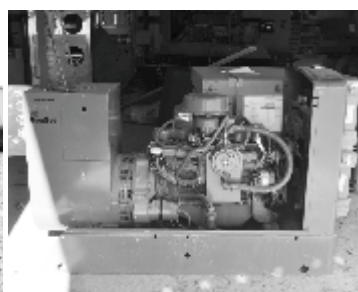
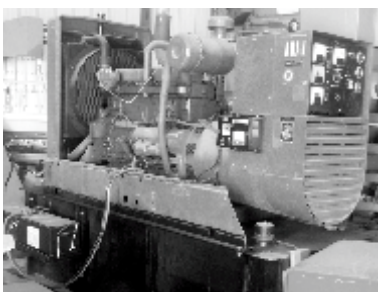


MCCONE ELECTRIC - FOR MORE INFORMATION REX 485-3430

- 2009 DODGE RAM 3500 SLT PICKUP, 4-DOOR, 4X4, 6.7 CUMMINS DIESEL, AUTO, 154,000 MILES W/ FLATBED, TOOLBOXES, WARN WINCH, A WESTERN MULE REAR BUMPER CRANE, RANCH HAND BUMPER
- 1991 FORD F800 CAB AND CHASSIS, 4X4, AUTOMATIC 4 SPEED TRANSMISSION, 7.8L DIESEL, REMAN ENGINE IN 2010, 90,000 MILES

MISCELLANEOUS

- BLACK & DECKER ELECTRIC MOWER
- BLACK & DECKER ELECTRIC WEED EATER
- BLACK & DECKER ELECTRIC HEDGE TRIMMER
- ONAN 20KW GENERATOR M/N 20ESL31695B 60 AMP 120/240 VOLTS
- ONAN 20KW GENERATOR M/N 20ESL33208B 60 AMP 120/240 VOLTS
- ONAN 100KW GENERATOR, 100.ODYC-15R/1014J 120/240 W/250 TANK

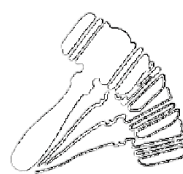


Auctioneer's Note: Mid-Rivers has a very high standard of keeping their vehicles serviced. If you are looking for a good pickup for your farm or ranch and a vehicle that is in great shape and ready to drive, don't miss this sale! This will be a short sale starting after the parade on Town & Country Day. See you on the 16th! Rick



RK

Rick Kniepkamp



Statewide Auction

WE SELL & ADVERTISE ACROSS THE UNITED STATES
 Circle, Montana www.r-kauction.com (406) 485-2548
 Rick Kniepkamp (406) 485-2548 or cell (406) 939-1632

ELK RIVER PRINTING • SIDNEY, MONTANA

All information is from sources deemed reliable, but is not guaranteed by the Seller or the Auctioneers. Offering is subject to error, omission, and approval of purchase by owner. We urge independent verification of each and every item submitted to the satisfaction of any prospective buyer. It is every potential bidder/purchaser's sole responsibility to accomplish his or her due diligence in whatever manner he or she deems advisable. Announcements made sale day take precedence over any printed materials. The property sells "As is-Where is." RK Statewide Auction Service and its auctioneers are acting solely as auctioneers for the seller.